

## PROJECT DESIGN CRITERIA

LOCATION	COOLING DESIGN	HEATING DESIGN	ENERGY DESIGN	GOVERNING CODES
PROJECT CITY: WICHITA, KANSAS PROJECT ELEVATION: 1330 FT. ABOVE SEA LEVEL	DESIGN WEATHER BASIS: ASHRAE 0.4% DESIGN DRY BULB: 101.1° F MEAN COINC. WET BULB: 73.2° F	DESIGN WEATHER BASIS: ASHRAE 99.6% DESIGN DRY BULB: 7.6° F	ASHRAE CLIMATE ZONE: 4A COOLING DEGREE DAYS(65): 1743 HEATING DEGREE DAYS(50): 1796	BUILDING CODE: 2018 INTERNATIONAL BUILDING CODE MECHANICAL CODE: 2021 INTL. MECHANICAL CODE PLUMBING CODE: 2021 UNIFORM PLUMBING CODE ELECTRICAL CODE: 2020 NATIONAL ELECTRIC CODE ENERGY CODE: 2010 ASHRAE 90.1 FIRE CODE: 2018 INTERNATIONAL FIRE CODE
ASHRAE CLIMATE DATA LOCATION: WICHITA EISENHOWER NATIONAL AIRPORT	DESIGN WET BULB: 77.6° F MEAN COINC. DRY BULB: 90.7° F			

## PROJECT GENERAL NOTES

1. ALL WORK PERFORMED SHALL COMPLY WITH CURRENT FEDERAL, STATE AND LOCAL CODES AND ORDINANCES.
2. CONTRACTOR SHALL REPORT ANY CONFLICTS TO THE ENGINEER IMMEDIATELY.
3. CONTRACTOR SHALL REVIEW THE DRAWINGS AND SPECIFICATIONS PRIOR TO BIDDING JOB AND DURING CONSTRUCTION. DRAWINGS ARE DIAGRAMMATIC IN NATURE AND SHOW THE GENERAL INSTALLATION OF EQUIPMENT & MATERIALS IN RELATIONSHIP TO STRUCTURE & OTHER TRADES. DRAWINGS MAY NOT INDICATE EVERY REQUIRED OFFSET, FITTING, ETC. FIELD VERIFY ACTUAL JOB CONDITIONS AND COORDINATE WORK WITH OTHER TRADES PRIOR TO BIDDING JOB, ORDERING EQUIPMENT, FABRICATION OF MATERIALS, OR STARTING WORK.
4. PROVIDE EQUIPMENT, MATERIALS, & LABOR FOR A COMPLETE PROJECT AS SHOWN IN THE DRAWINGS AND SPECIFICATIONS. CHANGE ORDERS WILL NOT BE GRANTED DUE TO LACK OF COORDINATION WITH OTHER TRADES & JOB CONDITIONS.
5. REVIEW DETAILS AND RISER DIAGRAMS FOR ADDITIONAL INFORMATION.
6. IF EQUIPMENT, MATERIALS, ETC. OTHER THAN THOSE SCHEDULED & SPECIFIED ARE FURNISHED, IT IS THE RESPONSIBILITY OF THE CONTRACTOR TO COORDINATE ALL ITEMS THAT AFFECT OTHER DISCIPLINES WITH THE CORRESPONDING CONTRACTOR AND THE GENERAL CONTRACTOR. ADDITIONAL FUNDING FOR DEVIATIONS WILL NOT BE ALLOWED.
7. MAINTAIN ALL REQUIRED CLEARANCES FOR NEW AND/OR EXISTING EQUIPMENT, FRESH AIR OPENINGS, EXHAUST/VENT OPENINGS, AND COMBUSTION OPENINGS.
8. THE GC SHALL CUT/PATCH FLOORS, WALLS, CEILINGS, & ROOFS AS REQUIRED FOR INSTALLATION OF MECHANICAL AND PLUMBING SYSTEMS CONVEYED IN THESE DRAWINGS. COORDINATE WITH GC.
9. THE CONTRACTOR SHALL BE RESPONSIBLE FOR STORAGE OF EQUIPMENT AND MATERIALS DURING CONSTRUCTION. ITEMS DAMAGED DURING CONSTRUCTION SHALL BE REPLACED AT THE CONTRACTOR'S EXPENSE.
10. UPON COMPLETION OF THE PROJECT THE CONTRACTOR SHALL PROVIDE AS-BUILT DRAWINGS TO THE OWNER, ARCHITECT, AND ENGINEER SHOWING EQUIPMENT, DUCTWORK, PIPING, ETC. THAT DIFFERS FROM CONSTRUCTION DOCUMENTS AS THEY ARE ACTUALLY INSTALLED. AS-BUILT DRAWINGS ARE TO BE READILY AVAILABLE ON SITE AND ALL CHANGES ARE TO BE DOCUMENTED IMMEDIATELY.
11. THE RESPONSIBILITY OF EACH CONTRACTOR IS NOT LIMITED TO THEIR SPECIFIC DISCIPLINE'S DRAWING SHEETS. REFER TO OTHER DISCIPLINE'S DRAWING SHEETS AS REQUIRED FOR ADDITIONAL INFORMATION/INSTRUCTIONS.
12. FIRE SEAL ALL PENETRATIONS THRU RATED ASSEMBLIES WITH APPROPRIATE SLEEVE / PROTECTION MATERIAL.
13. UNLESS NOTED OTHERWISE, SCHEDULED OR INDICATED AIRFLOWS ARE CUBIC FEET PER MINUTE (CFM), WATER FLOWS ARE GALLONS PER MINUTE (GPM), AIR PRESSURE DROPS AND STATIC PRESSURES ARE INCHES OF WATER COLUMN ("W.C.), AIR VELOCITIES ARE FEET PER MINUTE (FPM), WATER PRESSURE DROPS AND PUMP HEADS ARE FEET OF WATER COLUMN (FT. HD.), WATER VELOCITIES ARE FEET PER SECOND (FPS), CAPACITIES ARE THOUSANDS BTU/H (MBH), TEMPERATURES ARE °F, WEIGHTS ARE POUNDS (LB.), AREAS ARE SQUARE FEET (SQ. FT.), VOLUMES ARE GALLONS (GAL.), SOUND POWER LEVELS ARE DECIBELS (DB).
14. DO NOT ROUTE DUCTWORK OR PIPING ABOVE ELECTRICAL PANELS OR ELECTRICAL GEAR.
15. ALL EXTERIOR WALL AND/OR ROOF PENETRATIONS ARE TO BE SEALED WEATHERTIGHT.
16. PROVIDE AND INSTALL SUPPLEMENTAL STEEL FRAMING AS REQUIRED FOR SUPPORT OF SYSTEM COMPONENTS.
17. SUPPORT ALL PIPING AND DUCTWORK INDEPENDENTLY FROM ASSOCIATED EQUIPMENT, SO NO GRAVITY LOAD IS ON UNIT CONNECTIONS.

## PROJECT MECHANICAL NOTES

1. COORDINATE INSTALLATION OF MECHANICAL SYSTEMS WITH OTHER TRADES TO ENSURE NEAT AND ORDERLY INSTALLATION.
2. FIELD MEASURE FINAL DUCTWORK AND PIPING LOCATIONS PRIOR TO FABRICATION AND MAKE ADJUSTMENTS AS REQUIRED.
3. ADJUST LOCATION OF REGISTERS AND GRILLES AS REQUIRED TO ACCOMMODATE STRUCTURE AND LIGHTING LOCATIONS.
4. COORDINATE ACCESS TO EQUIPMENT, VALVES, AND DAMPERS INSTALLED ABOVE "INACCESSIBLE" CEILINGS AND IN CHASES, ETC. WITH GC. GC SHALL PROVIDE AND INSTALL ACCESS DOORS FOR EQUIPMENT SERVICE, DAMPERS AND / OR VALVES.
5. A MAXIMUM LENGTH OF 5'-0" FLEX DUCT MAY BE USED AT EACH RUNOUT TO SUPPLY DIFFUSERS. FLEX DUCT SHALL ONLY BE USED IN CONCEALED LOCATIONS, AND SHALL NOT BE USED IN RETURN OR EXHAUST SYSTEMS.
6. DUCT SIZES INDICATED ARE INSIDE CLEAR DIMENSIONS.
7. INSTALL MANUAL BALANCING DAMPER IN DUCT RUNOUTS TO AIR DEVICES WITH AIRFLOW INDICATED IN TAG, UNLESS DEVICE IS SCHEDULED TO BE PROVIDED WITH OPPOSED BLADE DAMPER. THIS INCLUDES AT EQUIPMENT SERVING ONE AIR DEVICE.
8. THERMOSTATS SHALL BE PLACED AT 4'-0" MAXIMUM ABOVE FINISHED FLOOR TO MEET ADA REQUIREMENTS.
9. PROVIDE FLEXIBLE CONNECTION AT ALL DUCT CONNECTIONS TO EQUIPMENT.
10. ALL FILTERS SHALL BE NEW AT PROJECT TURNOVER, AND ONE (1) SET OF SPARE FILTERS FOR ALL EQUIPMENT SHALL BE PROVIDED TO THE OWNER.

## PROJECT PLUMBING NOTES

1. COORDINATE INSTALLATION OF PLUMBING SYSTEMS WITH OTHER TRADES TO ENSURE NEAT AND ORDERLY INSTALLATION.
2. FIELD MEASURE FINAL PIPING LOCATIONS PRIOR TO FABRICATION AND MAKE ADJUSTMENTS AS REQUIRED.
3. COORDINATE ROUTING OF PLUMBING PIPING WITH DUCTWORK, LIGHTS, ARCHITECTURAL CEILING AND STRUCTURAL ELEMENTS. DUCTWORK SHALL TAKE PRECEDENCE OVER ALL PIPING, EXCEPT WHERE GRADE MUST BE MAINTAINED FOR DRAINAGE.
4. NO PIPING SHALL PENETRATE STRUCTURAL MEMBERS.
5. PROVIDE WCO AT BASE OF ALL WASTE STACKS INCLUDING LAVATORIES AND SINKS.
6. THE CONTRACTOR SHALL VERIFY ALL EXISTING CONDITIONS OF SANITARY SEWER / WATER / GAS SERVICES. COORDINATE WITH LOCAL UTILITIES AND AUTHORITIES WHERE REQUIRED.
7. REFER TO PLUMBING FIXTURE SCHEDULE FOR PIPING RUN-OUT SIZES TO EACH INDIVIDUAL PLUMBING FIXTURE.
8. CONTRACTOR SHALL VERIFY ALL CONNECTION REQUIREMENTS TO EQUIPMENT PROVIDED BY OTHERS.
9. UTILIZE LONG RADIUS SANITARY PATTERN FITTINGS FOR ALL CHANGES IN DIRECTION IN CONDENSATE DRAIN PIPING. PROVIDE CLEANOUT AT EACH 135° CHANGE IN DIRECTION.
10. PROVIDE TRAP GUARD DIAPHRAGM AT EACH FLOOR DRAIN, FLOOR SINK, AND TRENCH DRAIN, UNLESS NOTED OTHERWISE.
11. ALL PVC PIPING/DUCTING SHALL BE SOLID CORE.
12. CONTRACTOR TO COORDINATE WITH LOCAL UTILITY THE REQUIREMENTS FOR THE GAS SERVICE, METER AND INSTALLATION REQUIREMENTS. NEW BUILDING LOAD = 40 CFH (EACH METER).

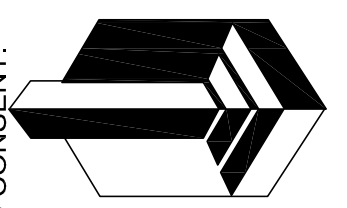
## SYMBOLS

HVAC DUCTWORK & ACCESSORIES					
SYMBOL	ABBR	DESCRIPTION	SYMBOL	ABBR	DESCRIPTION
		NEW DUCTWORK			45° TAKEOFF FITTING WITH MANUAL VOLUME DAMPER
		EXISTING DUCTWORK			MANUAL VOLUME DAMPER
		EXISTING DUCTWORK TO BE REMOVED		M	MOTORIZED DAMPER
		RECTANGLE DUCT UP		FD	FIRE DAMPER
		RECTANGLE DUCT DOWN		FS	COMBINATION FIRE/SMOKE DAMPER
		RECTANGULAR VANED ELBOW		S	SMOKE DAMPER
		ROUND DUCT UP			
		ROUND DUCT DOWN			
		ROUND ELBOW			
		CONCENTRIC TRANSITION			
		ECCENTRIC TRANSITION			
		SQUARE TO ROUND TRANSITION			
		DUCT DROP/RISE IN DIRECTION OF ARROW			
	SAG	DIFFUSER			
	RAG	RETURN / EXHAUST AIR GRILLE			
	EAG	EXHAUST AIR GRILLE			
		ARROW INDICATES THROW DIRECTION			

PIPING					
SYMBOL	ABBR	DESCRIPTION	SYMBOL	ABBR	DESCRIPTION
	W	SANITARY WASTE BELOW FLOOR			ELBOW UP
	GW	GREASE WASTE			ELBOW DOWN
	MUD/OIL	MUD OR OIL			TEE UP
	V	SANITARY VENT			TEE DOWN
	CD	CONDENSATE DRAIN			PIPE CAP OR PLUG
	RD	ROOF DRAIN			BALL VALVE
	ORD	ROOF OVERFLOW			BUTTERFLY VALVE
	CW	DOMESTIC COLD WATER			GATE VALVE
	HW	DOMESTIC HOT WATER			MANUAL BALANCING VALVE
	140°	DOMESTIC 140° HOT WATER			CHECK VALVE
	HWC	DOMESTIC HOT WATER CIRCULATING			STRAINER
	FP	FIRE PROTECTION			GAS COCK
	G	NATURAL GAS			PIPING UNION
	CWS	CHILLED WATER SUPPLY			PIPE REDUCER
	CWR	CHILLED WATER RETURN			VALVE IN RISER
	HWS	HEATING WATER SUPPLY		HB	HOSE BIBB
	HWR	HEATING WATER RETURN		FPWH	FREEZE PROOF WALL HYDRANT
	CTS	COOLING TOWER SUPPLY		FD	FLOOR DRAIN
	CTR	COOLING TOWER RETURN		FS	FLOOR SINK
	HPS	HEAT PUMP SUPPLY		RD/ORD	ROOF DRAIN
	HPR	HEAT PUMP RETURN		WCO	WALL CLEANOUT
	S	STEAM SUPPLY		FCO	FLOOR CLEANOUT
	CR	CONDENSATE RETURN		VTR	VENT THRU ROOF
	CA	REFRIGERATION AIR		CO	CLEANOUT
	N	NITROGEN			
	VAC	VACUUM			

## ABBREVIATIONS

SYMBOL	ABBR	DESCRIPTION
	P1.1	PLUMBING FIXTURE NUMBER
	E-1	EQUIPMENT DESIGNATION
		PLAN NOTE
	POC	POINT OF CONNECTION (CONNECT NEW TO EXISTING)
	(E)	EXISTING
	ABV	ABOVE
	BLW	BELOW
	DN	DOWN
	BTWN	BETWEEN
	BOD	BOTTOM OF DUCT (ABOVE FINISHED FLOOR)
	BOP	BOTTOM OF PIPE
	NTS	NOT TO SCALE
	AFF	ABOVE FINISHED FLOOR
	CA	COMBUSTION AIR
	OA	OUTDOOR AIR
	EA	EXHAUST AIR
	SA	SUPPLY AIR
	RA	RETURN AIR
	TA	TRANSFER AIR
	EAT	ENTERING AIR TEMPERATURE
	LAT	LEAVING AIR TEMPERATURE
	EWT	ENTERING WATER TEMPERATURE
	LWT	LEAVING WATER TEMPERATURE
	DB	DRY BULB TEMPERATURE
	WB	WET BULB TEMPERATURE
	CLNG	COOLING
	HTNG	HEATING
	SAG	SUPPLY AIR GRILLE
	RAG	RETURN AIR GRILLE
	TAG	TRANSFER AIR GRILLE
	OBD	OPPOSED BLADE DAMPER
	PBD	PARALLEL BLADE DAMPER
	WPL	WEATHER PROOF LOUVER
	WT	WEIGHT
	ESP	EXTERNAL STATIC PRESSURE
	APD	AIR PRESSURE DROP
	WPD	WATER PRESSURE DROP
	PD	PRESSURE DROP
	CM	CONSTRUCTION MANAGER
	GC	GENERAL CONTRACTOR
	MC	MECHANICAL CONTRACTOR
	PC	PLUMBING CONTRACTOR
	EC	ELECTRICAL CONTRACTOR
	TCC	TEMPERATURE CONTROLS CONTRACTOR
	UNO	UNLESS NOTED OTHERWISE
	RPZ	REDUCED PRESSURE ZONE ASSEMBLY
	PRV	PRESSURE REDUCING VALVE
		THERMOSTAT/SENSOR
		HUMIDISTAT/SENSOR
		WALL SWITCH / SENSOR
		CARBON DIOXIDE SENSOR

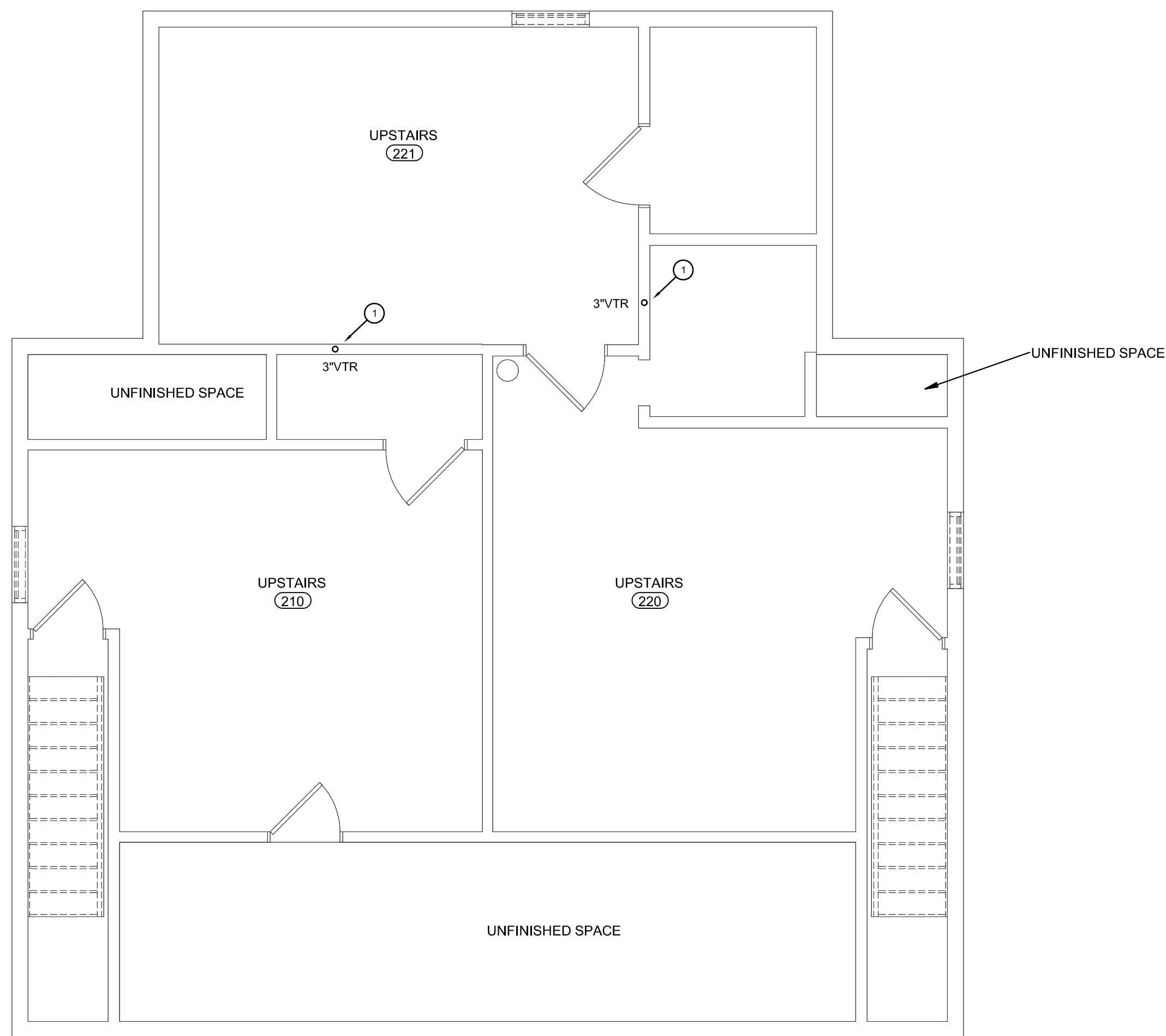


**LANDMARK ARCHITECTS**  
 1020 NORTH MAIN, HUTCHINSON, KANSAS 67501  
 620-663-5421 www.landmarkarchitects.net

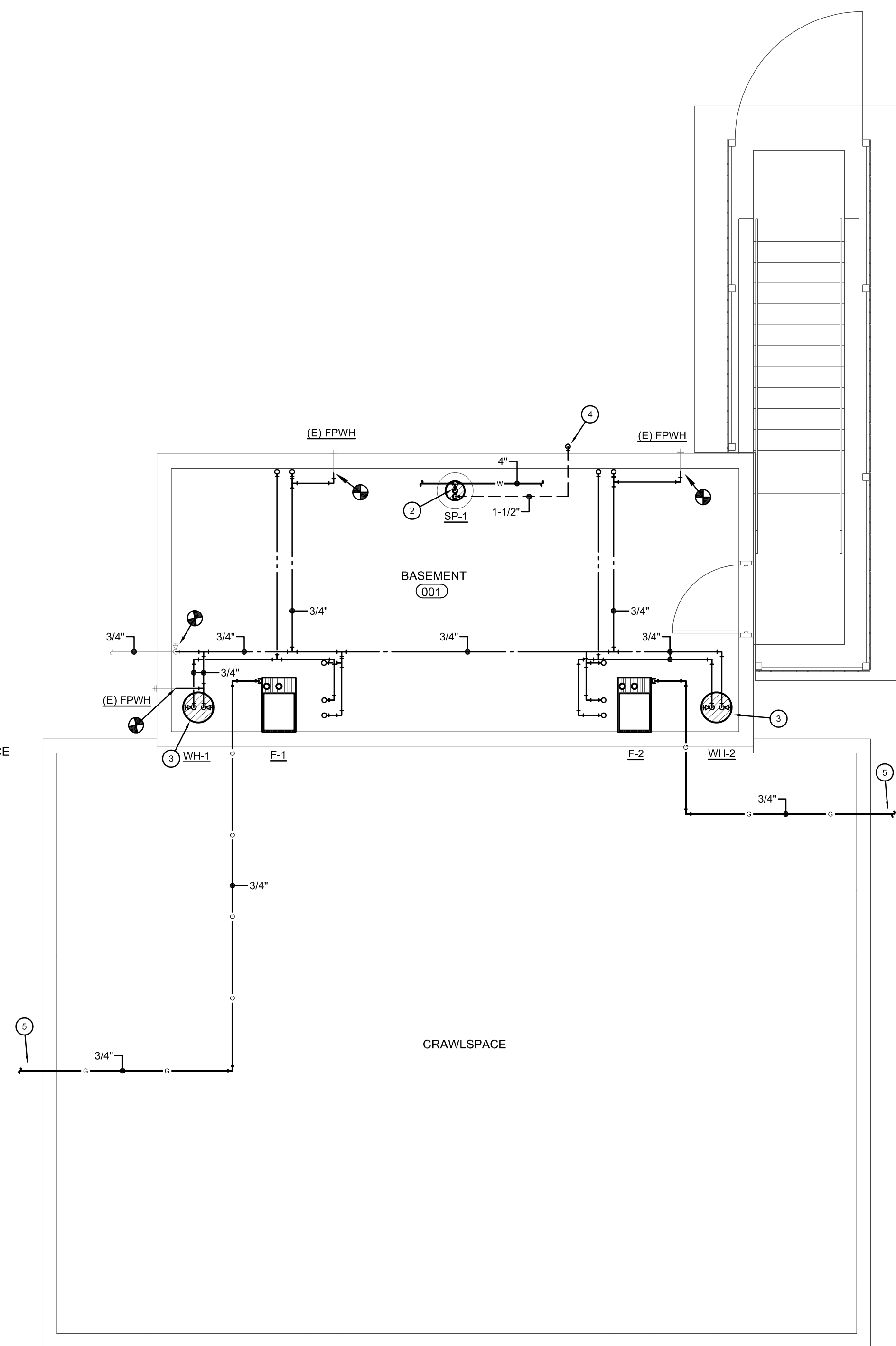
**RENOVATIONS TO EXISTING STRUCTURE FOR PROPOSED DAYCARE FACILITY**  
 209 S ASH ST, PRETTY PRAIRIE, KANSAS 67570

COMM. NO. : 2903-23  
 DRW BY: KGB  
 UPDATED:  
 ISS: 10/19/2023  
**SHT MPO.1**





**A UPSTAIRS PLUMBING PLAN**  
 SCALE - 1/4" = 1'-0"  
 NORTH



**B BASEMENT PLUMBING PLAN**  
 SCALE - 1/4" = 1'-0"  
 NORTH

**PLAN NOTES:**

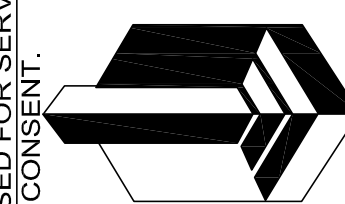
- 1 EXTEND 2" VENT PIPING UP IN WALL TO VTR SIZED INDICATED.
- 2 PROVIDE NEW SUMP BASIN CAP WITH VENT / DISCHARGE OPENINGS. EXTEND 2" DISCHARGE PIPING FROM SP-1 INTO TOP OF WASTE MAIN THIS AREA.
- 3 ROUTE T&P VALVE PIPING TO FD THIS AREA. TERMINATE WITH 2" AIRGAP (MIN).
- 4 EXTEND 1-1/2" PIPING FROM SP-1 BASIN LID OUT FOUNDATION WALL THROUGH EXISTING OPENING. SEAL PENETRATION WEATHERTIGHT.
- 5 ROUTE G PIPING FROM CRAWLSPACE OUT THROUGH FOUNDATION WALL THIS AREA. REFER TO SHEET P1.2 FOR CONTINUATION.

LANDMARK ARCHITECTS HEREBY EXPRESSLY RESERVES ITS COMMON LAW COPYRIGHT AND OTHER PROPERTY RIGHTS TO THESE PLANS. THESE PLANS AND DRAWINGS ARE NOT TO BE REPRODUCED, CHANGED, COPIED NOR USED FOR SERVICE IN ANY FORM OR MANNER WITHOUT FIRST OBTAINING THE EXPRESS WRITTEN PERMISSION OF LANDMARK ARCHITECTS. NOR ARE THEY TO BE ASSIGNED TO ANY THIRD PARTY WITHOUT FIRST OBTAINING WRITTEN PERMISSION AND CONSENT.

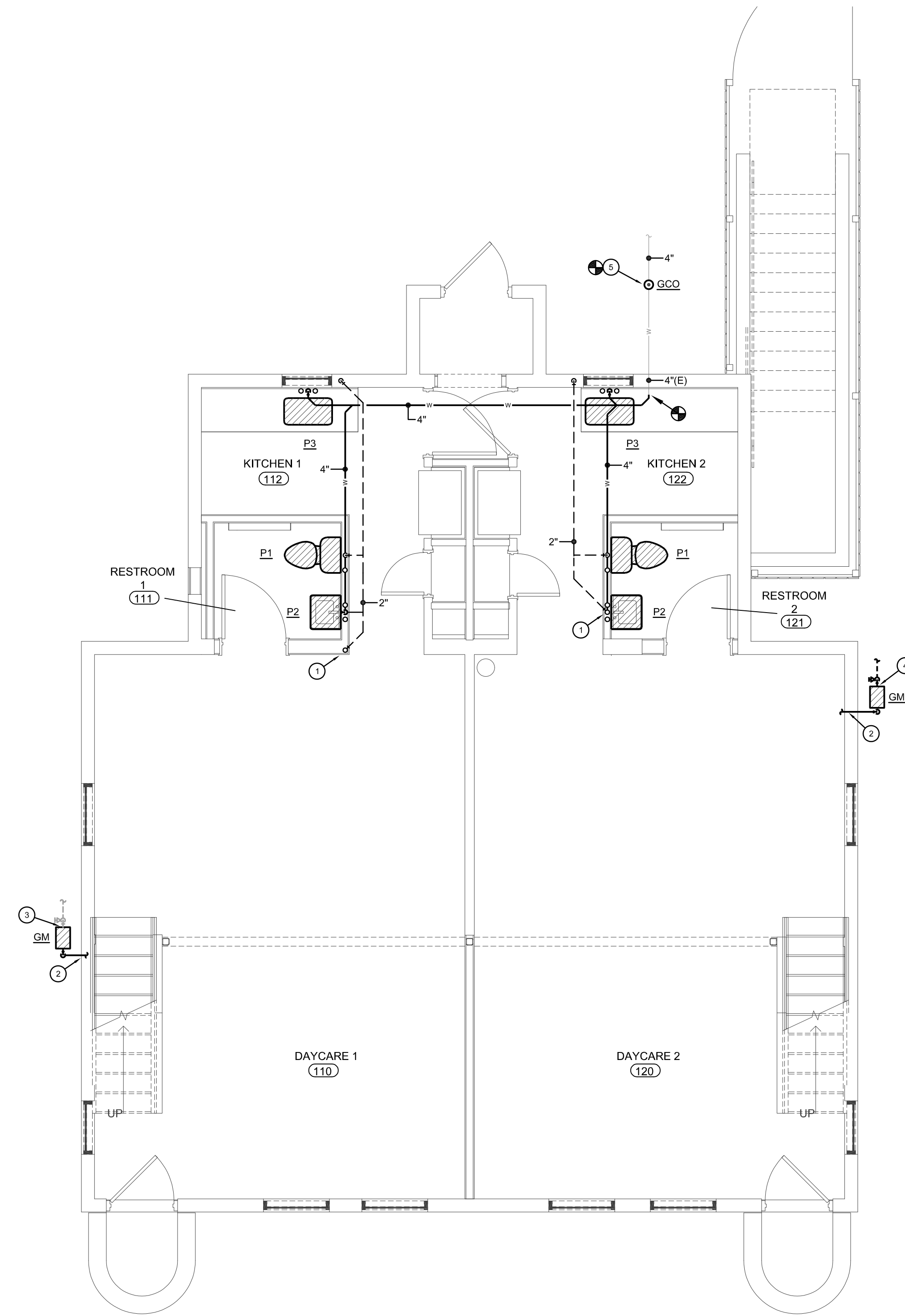
**RENOVATIONS TO EXISTING STRUCTURE FOR  
 PROPOSED DAYCARE FACILITY**  
**209 S ASH ST, PRETTY PRAIRIE, KANSAS 67570**

COMM. NO. :	2903-23
DRW BY:	KGB
UPDATED:	
ISS:	10/19/2023
SHT	P1.1


**INNOVATIVE GROUPS**  
 801 E. DOUGLAS  
 2ND FLOOR  
 WICHITA, KS 67202  
 INNOVATIVE-GROUPS.COM



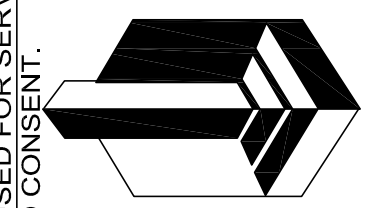
**LANDMARK ARCHITECTS**  
 1020 NORTH MAIN, HUTCHINSON, KANSAS 67501  
 620-663-5421 www.landmarkarchitects.net



**PLAN NOTES:**

- ① EXTEND 2"V PIPING UP IN WALL THIS AREA. REFER TO PLAN 'A' ON SHEET P1.1 FOR CONTINUATION.
- ② EXTEND G PIPING FROM CRAWLSPACE TO GAS METER THIS LOCATION. COORDINATE WITH UTILITY COMPANY FOR INSTALLATION REQUIREMENTS.
- ③ SET NEW GAS METER AND CONNECT TO EXISTING GAS SERVICE PIPING THIS AREA.
- ④ SET NEW GAS METER AND EXTEND SERVICE PIPING TO MAIN. COORDINATE REQUIREMENTS WITH LOCAL UTILITY COMPANY.
- ⑤ INSTALL GRADE CLEANOUT THIS AREA.

**A MAIN FLOOR PLUMBING PLAN**  
 SCALE - 1/4" = 1'-0"  
 NORTH



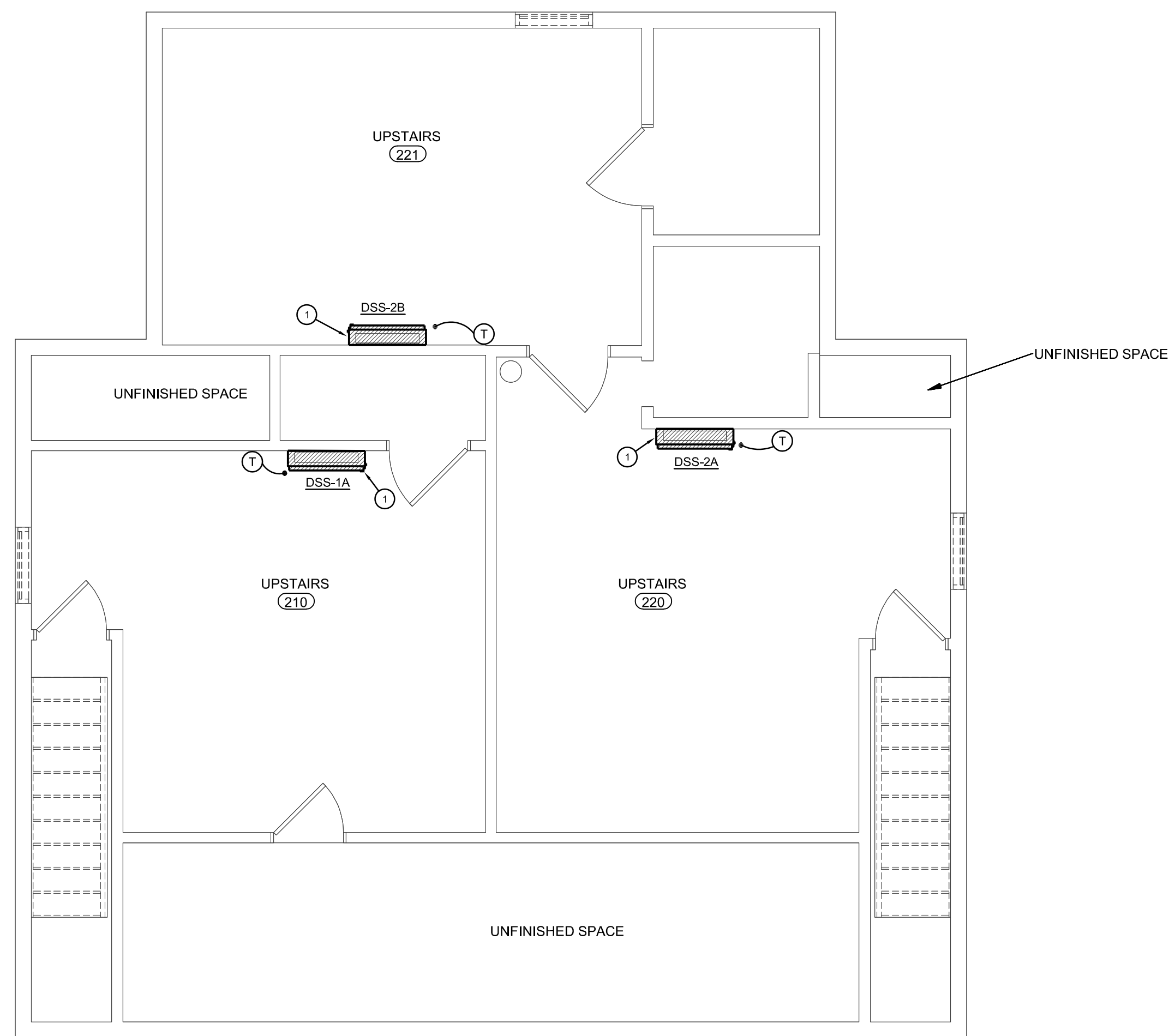
**LANDMARK ARCHITECTS**  
 1020 NORTH MAIN, HUTCHINSON, KANSAS 67501  
 620-663-5421 www.landmarkarchitects.net

LANDMARK ARCHITECTS HEREBY EXPRESSLY RESERVES ITS COMMON LAW COPYRIGHT AND OTHER PROPERTY RIGHTS TO THESE PLANS. THESE PLANS AND DRAWINGS ARE NOT TO BE REPRODUCED, CHANGED, COPIED NOR USED FOR SERVICE IN ANY FORM OR MANNER WITHOUT FIRST OBTAINING THE EXPRESS WRITTEN PERMISSION OF LANDMARK ARCHITECTS. NOR ARE THEY TO BE ASSIGNED TO ANY THIRD PARTY WITHOUT FIRST OBTAINING WRITTEN PERMISSION AND CONSENT.

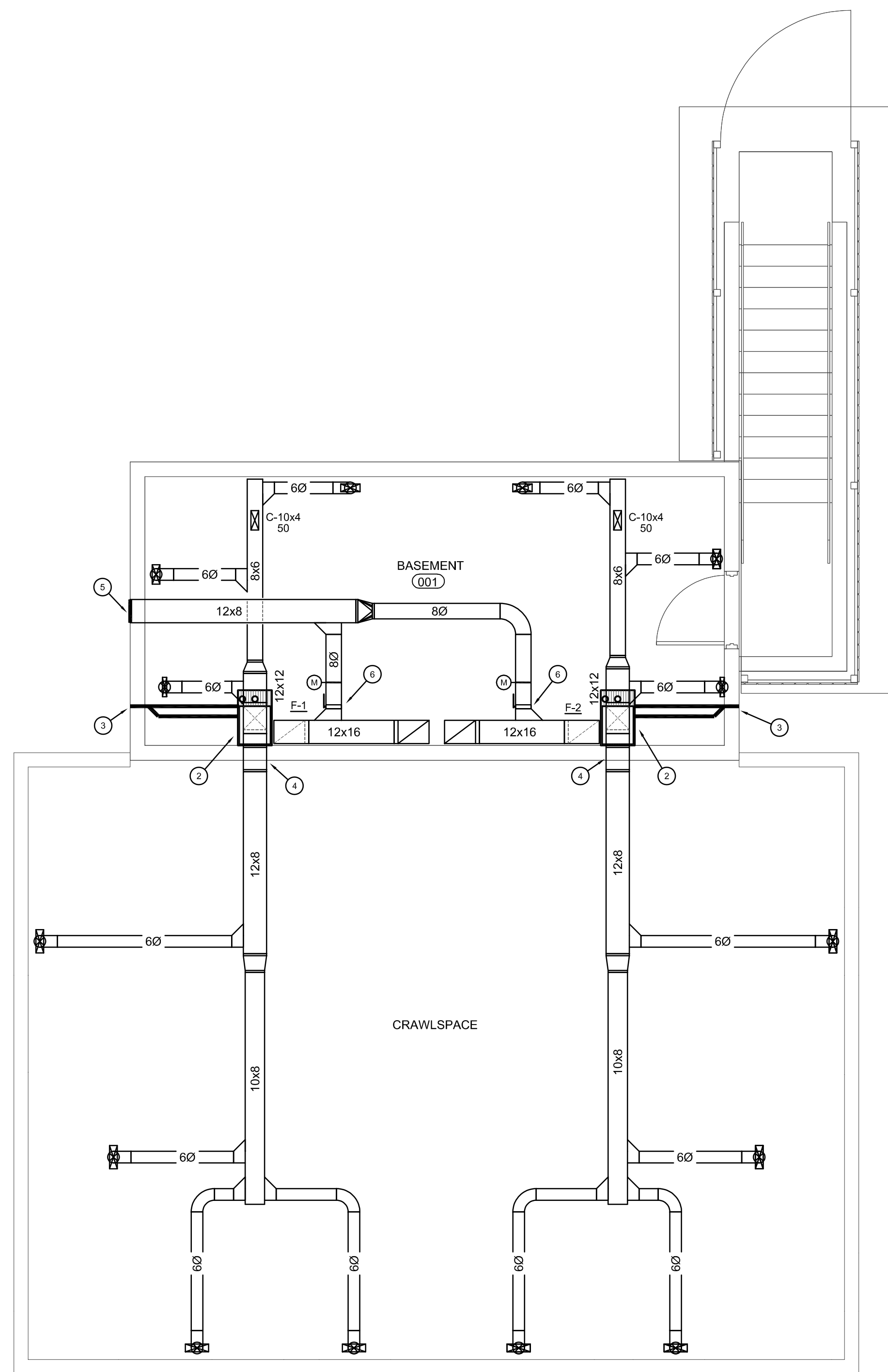
**RENOVATIONS TO EXISTING STRUCTURE FOR  
 PROPOSED DAYCARE FACILITY  
 209 S ASH ST, PRETTY PRAIRIE, KANSAS 67570**

**INNOVATIVE GROUPS**  
 801 E. DOUGLAS  
 2ND FLOOR  
 WICHITA, KS 67202  
 INNOVATIVE-GROUPS.COM

COMM. NO. :	2903-23
DRW BY:	KGB
UPDATED:	
ISS:	10/19/2023
SHT	P1.2



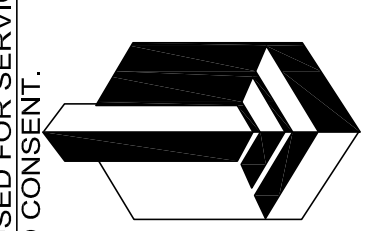
**A** UPSTAIRS HVAC PLAN  
 SCALE - 1/4" = 1'-0"  
 NORTH



**B** BASEMENT HVAC PLAN  
 SCALE - 1/4" = 1'-0"  
 NORTH

**PLAN NOTES:**

- 1 MOUNT TOP OF DSS INDOOR UNIT 12" (MIN) FROM CEILING. ROUTE REFRIGERATION / CONDENSATE PIPING DOWN IN WALL TO BASEMENT. EXTEND REFRIGERATION PIPING OUT TO DSS OUTDOOR UNIT AND ROUTE CD PIPING TO FD. TERMINATE CD PIPING WITH 2" AIRGAP (MIN).
- 2 ROUTE 3/4" CD PIPING TO FD, TERMINATE WITH 2" AIRGAP (MIN).
- 3 EXTEND VENT / INTAKE PIPING OUT WALL THIS AREA. TERMINATE WITH MANUFACTURER PROVIDED CONCENTRIC TERMINATION KIT.
- 4 ROUTE SA DUCTWORK INTO CRAWLSPACE THROUGH EXISTING FOUNDATION OPENINGS.
- 5 TERMINATE OA DUCTWORK THROUGH TOP PORTION OF EXISTING WINDOW OPENING WITH SHEET METAL WALL CAP WITH FRAMED INSECT SCREEN OVER OPENING. PROVIDE 2" RIGID INSULATED SHEET METAL COVER OVER REMAINING PORTIONS OF THE WINDOW OPENING. FLASH & SEAL OPENING WEATHERTIGHT.
- 6 PROVIDE MANUAL DAMPER AND 24V 2-POSITION MOTORIZED DAMPER IN OA DUCTWORK. BALANCE MANUAL DAMPER TO 150 CFM. INTERLOCK MOTORIZED DAMPER TO OPEN WITH ASSOCIATED BLOWER OPERATION.



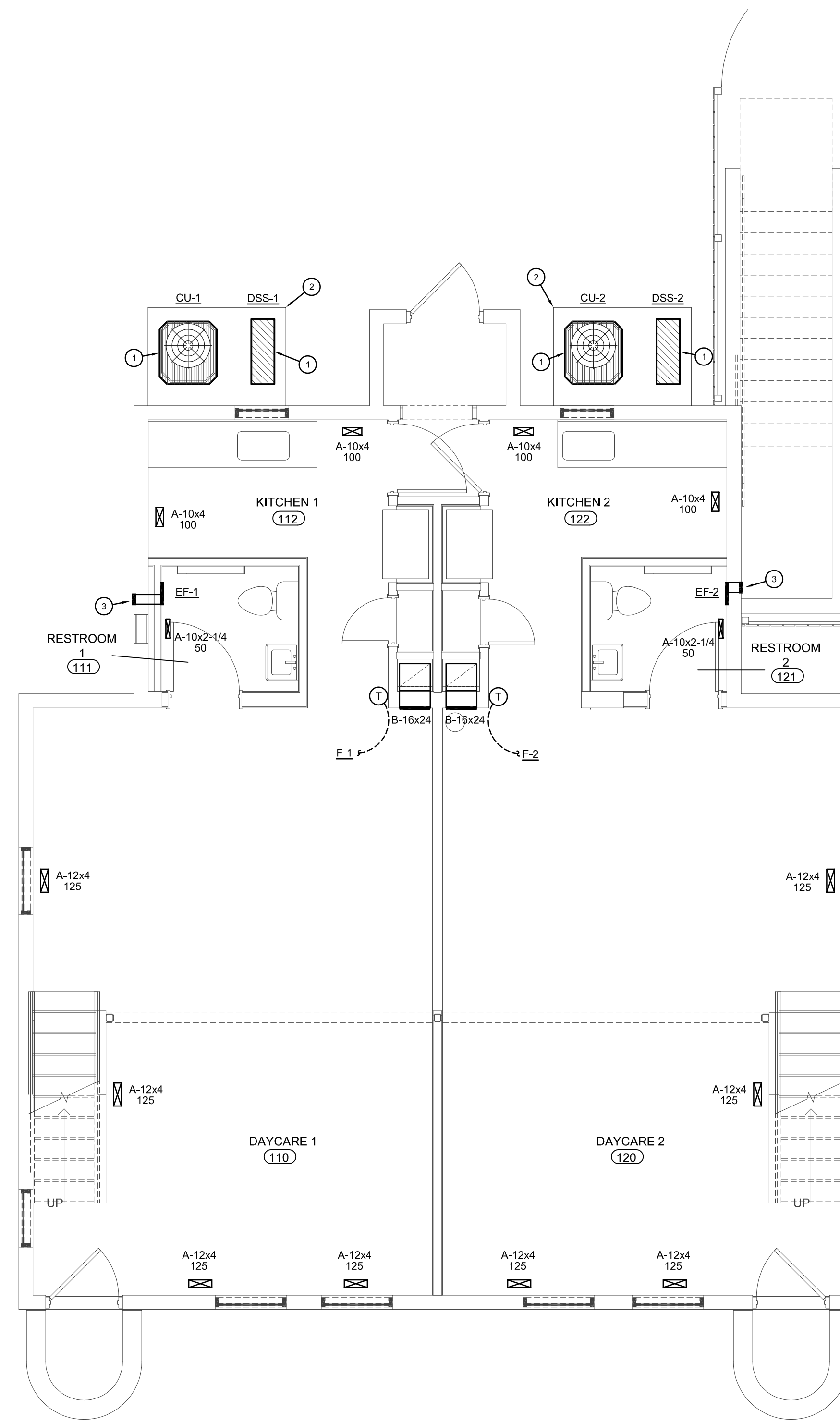
**LANDMARK ARCHITECTS**  
 1020 NORTH MAIN, HUTCHINSON, KANSAS 67501  
 620-663-5421 www.landmarkarchitects.net

LANDMARK ARCHITECTS HEREBY EXPRESSLY RESERVES ITS COMMON LAW COPYRIGHT AND OTHER PROPERTY RIGHTS TO THESE PLANS. THESE PLANS AND DRAWINGS ARE NOT TO BE REPRODUCED, CHANGED, COPIED NOR USED FOR SERVICE IN ANY FORM OR MANNER WITHOUT FIRST OBTAINING THE EXPRESS WRITTEN PERMISSION OF LANDMARK ARCHITECTS, NOR ARE THEY TO BE ASSIGNED TO ANY THIRD PARTY WITHOUT FIRST OBTAINING WRITTEN PERMISSION AND CONSENT.

**RENOVATIONS TO EXISTING STRUCTURE FOR  
 PROPOSED DAYCARE FACILITY  
 209 S ASH ST, PRETTY PRAIRIE, KANSAS 67570**

**INNOVATIVE GROUPS**  
 801 E. DOUGLAS  
 2ND FLOOR  
 WICHITA, KS 67202  
 INNOVATIVE-GROUPS.COM

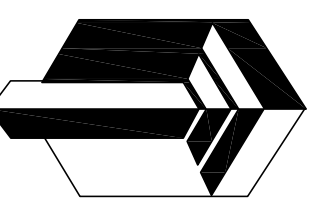
COMM. NO. :	2903-23
DRW BY:	KGB
UPDATED:	
ISS:	10/19/2023
SHT	M1.1



**A** MAIN FLOOR HVAC PLAN  
 SCALE - 1/4" = 1'-0"  
 NORTH

**PLAN NOTES:**

- ① ROUTE REFRIGERATION PIPING TO ASSOCIATED INDOOR UNIT. INSTALL PIPING PER MANUFACTURER RECOMMENDATIONS.
- ② PROVIDE 4" CONCRETE PAD FOR OUTDOOR UNITS.
- ③ EXTEND 4" EA DUCT OUT WALL TO MANUFACTURER PROVIDED WALL CAP.



**LANDMARK ARCHITECTS**  
 1020 NORTH MAIN, HUTCHINSON, KANSAS 67501  
 620-663-5421 www.landmarkarchitects.net

LANDMARK ARCHITECTS HEREBY EXPRESSLY RESERVES ITS COMMON LAW COPYRIGHT AND OTHER PROPERTY RIGHTS TO THESE PLANS. THESE PLANS AND DRAWINGS ARE NOT TO BE REPRODUCED, CHANGED, COPIED NOR USED FOR SERVICE IN ANY FORM OR MANNER WITHOUT FIRST OBTAINING THE EXPRESS WRITTEN PERMISSION OF LANDMARK ARCHITECTS. NOR ARE THEY TO BE ASSIGNED TO ANY THIRD PARTY WITHOUT FIRST OBTAINING WRITTEN PERMISSION AND CONSENT.

**RENOVATIONS TO EXISTING STRUCTURE FOR PROPOSED DAYCARE FACILITY**  
 209 S ASH ST, PRETTY PRAIRIE, KANSAS 67570

**INNOVATIVE GROUPS**  
 801 E. DOUGLAS  
 2ND FLOOR  
 WICHITA, KS 67202  
 INNOVATIVE-GROUPS.COM

COMM. NO. :	2903-23
DRW BY:	KGB
UPDATED:	
ISS:	10/19/2023
SHT	M1.2